



**MS**



Mantovanibenne s.r.l. - Mirandola (Mo) Italy - Tel. +39 0535 615811 - Fax +39 0535 615830  
sales@mantovanibenne.com

RIF: 97878/E\_07/11 Rev. 00  
Caratteristiche di prodotto e specifiche possono variare senza obbligo di preavviso.  
Les caractéristiques et les spécifications des produits peuvent être modifiées sans préavis.

# MS Multisystem

The MS Multisystem is a versatile product suitable for both primary and secondary demolition. This attachment consists of a main structure, the machine body, to which it is possible to mount different types of jaws transforming the Multisystem into a specific attachment for the demolition of structures, the reduction and fragmentation of material up to the cutting of ferrous materials.



**Interchangeable jaws kits**  
Depending on the work that has to be carried out it is possible to apply the most suitable jaw kit needed. To facilitate the replacement of the jaw there is a particular bushing system that keeps the two parts together.

We are constantly improving our products and therefore we reserve the right to change the design and technical specifications without prior notice.

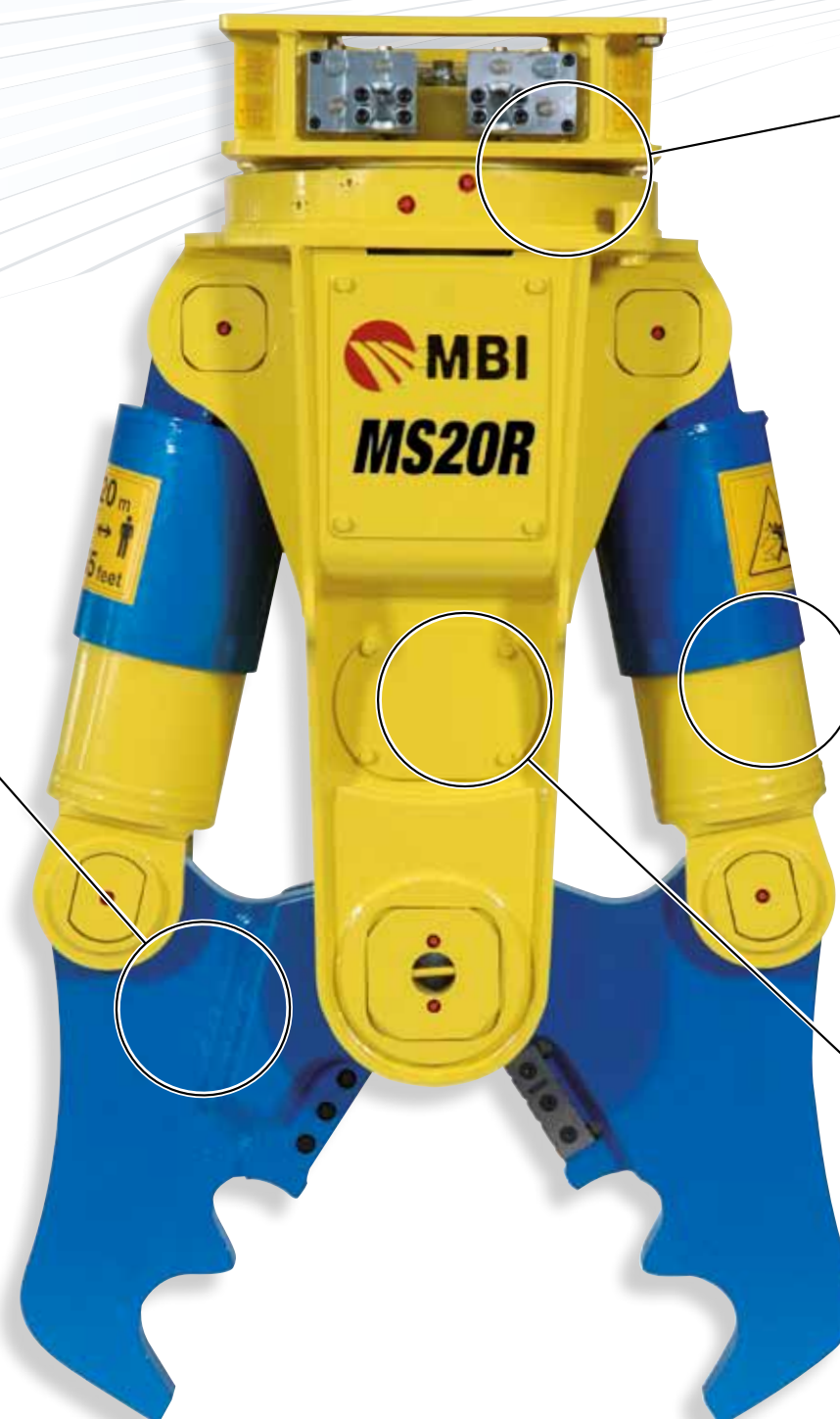
TECHNICAL SPECIFICATIONS							
MODEL		MS20R	MS30R	MS40R	MS60R	MS130R	
Excavator Weight with MS bucket place	t	18-25	25-35	35-50	50-75	120-160	
Excavator Weight with MS stick place	t	12-18	15-24	24-30	30-50	80-120	
Hydraulic working pressure	bar	320-350	320-350	320-350	320-350	320-350	
Oil flow	l/min	150-200	200-250	250-300	280-320	600-800	
<b>MS + CRUSHER JAW SET CR</b>	Tool Weight*	kg	2250	2750	4550	6500	14000
	Opening	mm	820	900	1200	1705	2500
	Height max.	mm	2060	2240	3045	3255	4300
<b>MS + PULVERISER JAW SET CP</b>	Tool Weight*	kg	2300	2900	4650	7000	○
	Opening	mm	730	875	950	1250	○
	Height max.	mm	2020	2260	2950	3095	○
<b>MS + SHEAR JAW SET SH</b>	Tool Weight*	kg	2250	2850	4550	6600	14000
	Opening	mm	445	485	620	875	1150
	Height max.	mm	1990	2070	2845	3165	4150
<b>MS + COMBI CUTTER JAW SET CC</b>	Tool Weight*	kg	2300	2900	4700	6600	○
	Opening	mm	700	825	1075	1385	○
	Height max.	mm	2100	2220	3070	3355	○
<b>MS + PLATE SHEAR JAW SET PSH</b>	Tool Weight*	kg	2150	2650	4300	6000	○
	Opening	mm	225	225	285	400	○
	Height max.	mm	2085	2160	2705	3090	○
<b>MS + RECYCLING JAW SET REC**</b>	Tool Weight*	kg	2300	3100	○	○	○
	Opening	mm	550	730	○	○	○
	Height max.	mm	2000	2310	○	○	○

RIF. 97888/E

\* Tool weight does include Mantovanibenne top bracket.

○ Not available

\*\*New Version available soon.



**Hydraulic rotation**  
The sturdy rotation allows accurate positioning of the attachment in any working environment and in complete safety thanks to the presence of a double-row ball thrust bearing.



**CR** Crusher jaw set

**Incredible strength**  
Thanks to the action of the two powerful cylinders this attachment gives an enormous force to the tips, assuring high reliability thanks to the presence of the forged piston rod.

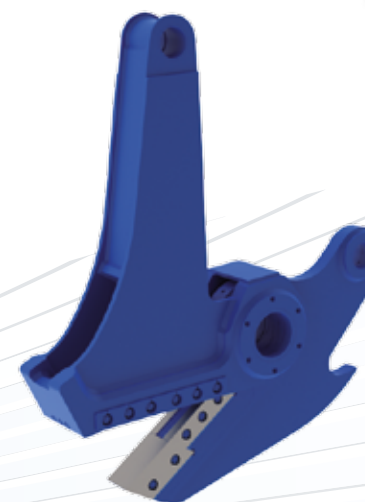


**CP** Pulveriser jaw set

**Speed Valve**  
The high performance of the cylinders is guaranteed by the presence of a speed valve. In the case of excavators with a high flow rate it is not necessary to use this application.



**SH** Shear jaw set



**PSH** Plate shear jaw set



**REC** Recycling jaw set



**CC** Combi cutter jaw set